

# PARENTAL PARTNERSHIP

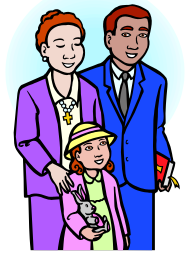
Information for Parents

*Together we make a  
Family!*

*Growing Happy, Healthy  
Children*



Parents are children's prime educators in their earliest years and they continue to play a major role in their young child's learning when they enter the early years setting.



When staff and parents work together to support children's learning it can have significant positive effects on the way in which children value themselves and those around them.

### **Parental Partnership is about:**

- \* promoting close links between staff and parent/carers
- \* exchanging and recording information relevant to children's development, progress and learning
- \* respecting each other's role in educating and caring for the child
- \* informing parents/carers about aims, policies, procedures and curriculum
- \* informing and supporting parents when dealing with outside agencies or transition to school
- \* dealing promptly and efficiently with enquiries, concerns or complaints
- \* making parents/carers feel welcome and valued

Throughout the year there are many opportunities for you to become involved and support the work of the nursery:

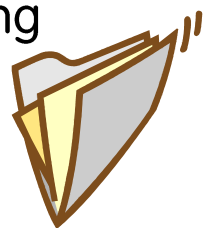


- \* meetings and scheduled visits are held throughout the year – stay and play days, parent progress meetings, concerts and charity fundraisers.
- \* parents' leaflets addressing a wide variety of different topics and issues are available in the nursery foyer. These leaflets inform and support parents in working with their children.
- \* Parent's policies and procedures.

\* regular newsletters keep parents informed about important dates, forthcoming events and any new developments in nursery. Other information is regularly displayed and updated on the nursery notice boards.



\* parent interviews are held once per year giving working parents the opportunity to meet the staff, view the facilities and discuss their child's development.



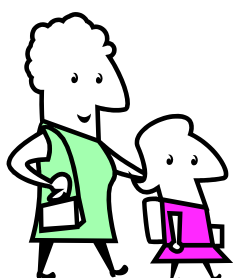
- \* each child in nursery has their own ILD and Learning Journey. Parents are encouraged to contribute to these and Key Workers use them to share targets with parents.
- \* providing us with feedback about our service by completing questionnaires or taking part in our parent consultations.

The contribution of parents to the nursery, in whatever capacity, is extremely valuable.

Parents are an integral part of the day to day running of the nursery and contributions to fundraising or practical help are necessary and appreciated.

We particularly welcome offers of help to maintain the nursery garden and to accompany children on walks and outings.

**Please let nursery staff know if you have any special talents, skills or interests you could offer!**



The nursery has Stay and Play time when you, or other family members can come along and join your child in nursery.

Spending time in nursery is beneficial to your child, yourself and nursery staff. You may wish to use the time getting to know the staff and other children a little better. You may prefer to spend time observing or playing alongside your own child. Or you may feel more comfortable being kept busy with 'house keeping' jobs.

Here are suggestions of some activities you may wish to become involved in:

- table-top games
- reading stories
- restocking art, craft,
- modelling or writing areas
- cutting paper or mounting pictures
- gardening and planting
- repairing resources