



newsletter

Newsletter – March / April 2018



“Together we make a family!”



Follow us on Twitter, Instagram and like us on Facebook!

Three great ways for you to keep up to date with all the latest news from the KingsWellies gang!

Hello Spring! We have a BUMPER newsletter for you this time..... We have been soooooo very busy during term 3 and have LOTS planned for term 4!

Easter Celebrations

Do you like our Easter bonnets? We also had great fun painting, decorating and rolling our eggs down the Prime Four “mountain” beside the nursery. We made lots of chocolate Easter nests, painted daffodils and made Easter cards. We have been very busy.



RSPB – Early Years Habitat Explorer Sessions

We really enjoyed having the RSPB visit us. We spent lots of time outside exploring the South Park and our playground. We learned how to identify habitats and found and identified LOTS of minibeasts. We have also made our own minibeast hotel – we hope to attract lots of residents! Other sessions will include exploring our green spaces using our five senses and making our own nature's colours collection and creating our own piece of wild art. We will also be using lots of "wild words" when we are thinking about the journey of an animal. Lots of fun!



Spring has sprung! Do you like our new Spring scene in reception?

We helped Scott to design, build, paint and make our lego mountain scene. We learned how to paper mache and spent lots of time building the lego which was a tricky job but very good for our technologies skills. We love playing with the crane and the KingsWellies Express!

We also helped Scott to build us our very own "den" outside. We love hiding in it and using our torches to tell scary stories.



Sports Relief

We baked all week, dressed up in our sports gear and managed to score lots of goals against Megan in "beat the goalie."



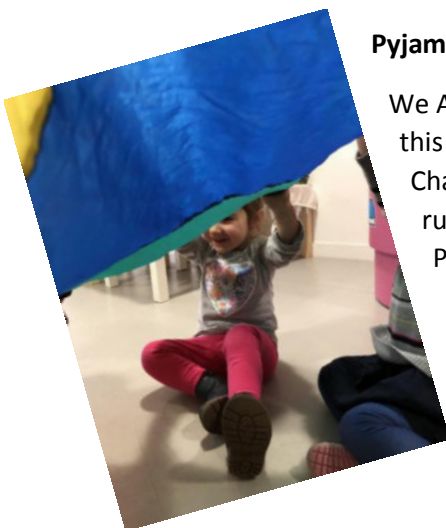
We also raised £123.29 for this very worthwhile cause. Many thanks to all who contributed.



**SPORT
RELIEF**

Pyjama Drama

We ALL got a chance to participate in some extra Pyjama Drama sessions this term. Kristine worked with us on the Chinese New Year, The Gruffalo, Charlie and the Chocolate Factory and Kindness. Our imaginations were running riot and we all had great fun. If you would like to sign up for extra Pyjama Drama sessions, please see Kerry in reception.



**pyjama
drama**
drama & play for every day!

La Jolie Ronde French Lessons

We have been learning our numbers, our colours, the parts of our bodies, our names, how to greet our friends and all about Easter in FRENCH! We also had an egg hunt to celebrate our French Easter. Linda has got lots more planned for us in term 4 and we are growing in confidence every week.

Linda also has a series of excellent books and CDs for sale. Please let us know if you would like to purchase any. This will help to reinforce our vocabulary at home too.

Thank YOU Apache

A HUGE thank you goes to George at Apache who helped us to purchase this wonderful music trolley and instruments. George was soooooo impressed with us when we came for our sing song at Christmas that he insisted on buying us this lovely present. Thank you so much Apache. We will get lots of good use out of our new instruments.



EARLY YEARS FRENCH!

ENABLING CHILDREN TO EXCEL AT FRENCH FOR 3-4 YEAR OLDS

Follows the Early Years Foundation Stage

WHY SHOULD MY CHILD LEARN FRENCH WITH LA JOLIE RONDE?

From day one they will:

- Imitate and repeat oral activities
- Be taught by fully vetted, trained and insured tutors
- Learn through fun songs, puppets, finger rhymes and games
- Benefit from a structured and progressive programme, which enhances other learning
- Be rewarded for special achievements
- Gain a good grounding for future language learning

La Jolie Ronde has been at the forefront of modern language teaching since 1983. It continues to offer a unique, structured and proven programme for children aged 3-11 years old enabling them to excel in a foreign language.

La Jolie Ronde French and Spanish are taught to tens of thousands of children each week by fully trained teachers in over 1,500 centres across the UK and Ireland.

www.lajolieronde.co.uk www.lajolieronde.ie



Healthy Body Happy Me Campaign 2018

This April, we will be getting involved in LOTS of health and happiness.....

- Music and movement
- Active play
- The Daily Mile
- Physical literacy
- Treasure hunt

For more ideas on what you can do with your child at home to promote health and happiness, you can download lots of activity guides from www.ndna.org.uk/healthy

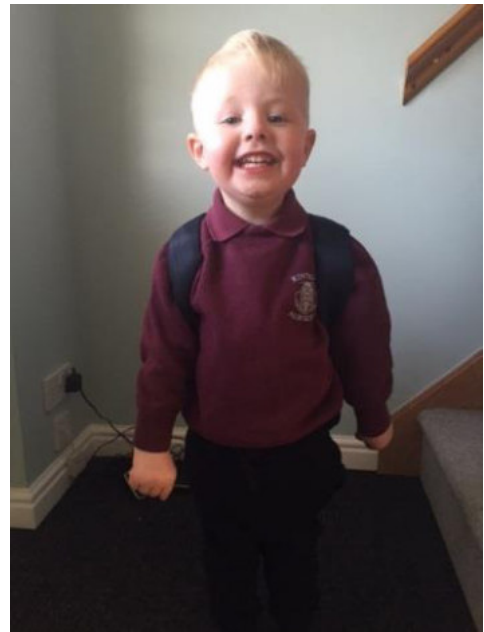


Enquiry / Tinker Table

Many thanks to everyone who donated some of their old technologies for our enquiry table. We have loved taking things to bits! We are still looking for more remote controls, cameras, laptops, sky boxes, calculators etc. Please remember us when you are clearing out.



Look at Findlay Ewen in his new nursery uniform. He looks so grown up! We miss you Finlay!



Quality Assurance

We recently had a quality assurance visit from our Aberdeen City Early Years Advisor, Claire Reith. Claire was very pleased with everything that she saw and gave us one or two small pointers to work on. Keep up the great work Wellies Gang!

Staffing Update

Welcome to Tracey, Katelyn and Gosia who have all recently joined us. Welcome also to Julie Munro who joins us every Monday afternoon. Julie is a P1 teacher at Crombie School and has been joining us to increase her knowledge of the early year's curriculum. It is great having her and we have been sharing lots of good ideas.



Tracey Reid

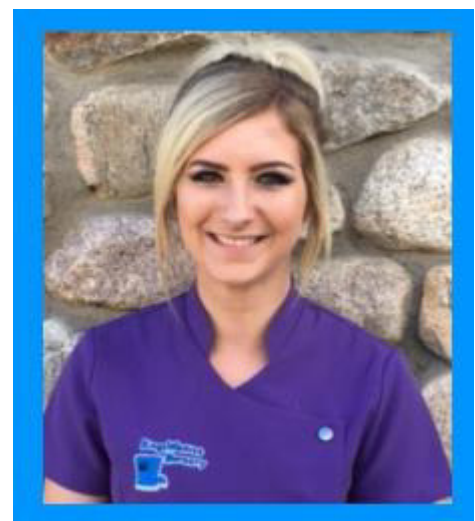


Katelyn Corsar



Gosia Dudkiewicz

Huge congratulations also to Hannah who has just completed her SVQ3 in Childhood Practice. Well done Hannah – this is a huge achievement and very well deserved.





Best wishes also to Aimee who has sadly left us. Aimee has gone to progress her career in the oil industry. We will really miss Aimee as she was an excellent “face” of KingsWellies but wish her all the very best in the next chapter of her life. You will go far Aimee..... We are delighted to welcome Kerryn as our new reception manager. Kerryn will continue in her role as Nursery Practitioner in the mornings and will work in the office every afternoon. Congratulations Kerryn – great job so far!



Life Skills Awards – April 2018

We have just developed a new Purple Award for our baby room. We asked staff what skills they would like our baby room children to develop. Please see our Purple Award attached for your information.

This month, we will be focusing on the following:

Red Award (pre-school children): I can take photos or record sound and images to show the world around me, I can find information from pictures, I can cross the road safely, I have visited places in the community

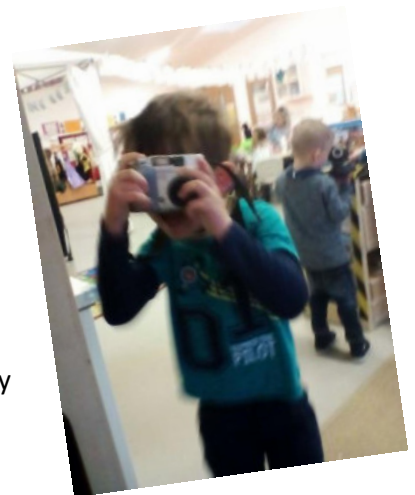
Pink Award (anti-pre-school children): I have visited places in the community, I can look after my nursery bag and its contents, I can cross roads safely



Blue Award (toddler children): I can identify my basic body parts, I have visited places in the community, I can cross the road safely

Purple Award (babies): I can help to tidy up, I can recognise my own name, I have visited places in the community, I can play alongside others nicely

Please help us by reinforcing these VERY important skills at home too.



Sequence Books

Do you like our new sequence books? These are to enable our children to LEAD their own learning. Staff will support and assist but we want our children to take the lead and to be able to work independently. We will be using these to help us to make our own birthday cakes with our friends. Staff will continue to develop these as new topics and experiences arise.

See the office if you wish to sign one out and remember to take pictures of your creations.



What will we be learning and thinking about in April?

Over the next few weeks, we will be focusing on a variety of topics in our playrooms. These will include:

- **KINDNESS** – Are you a bucket filler or a bucket dipper? We will be working on promoting Kindness through our Pyjama Drama sessions with Kristine
- Child-led improvement groups – Our Eco Group, Kindness Group, Playground Improvement Group and Graduation Group will keep working hard

to improve our nursery. Our Playground Group raised £50 and purchased lots of new resources for outside play. **Would you like to join our Parent Group? More information to follow.**

- Allotment planting and hanging baskets
- 2D and 3D shape – **please donate your junk for our junk modelling and house corners**
- Seasons and sun safety – **please remember your sun cream!**
- Superhero Week – more information to follow
- The Scottish Daily Mile - we aim to jog, run or walk for up to 15 minutes every day!
- LOTS of Reflection Time in our interest groups; talking about our learning and what we would like to learn with our key workers. Adding to our Talking and Thinking Trees. Working on our floorbooks.
- Outdoor play – barbeques, pizza oven, mud kitchen, water wall, minibeast hunts, ice cream van, den, visits and lots more
- Grow well choices – making healthy decisions
- Makaton – we are getting good at using this sign language!



- World map project – **Where have you visited in the world? Have you got any photos or souvenirs for our display in reception?**
- Happy Body Healthy Me Campaign 2018
- Transport and Road Safety – visit from the lolly pop person
- RSPB sessions – Habitat Explorer, Sensing The World and Wild Words
- Graduation celebration – our pre-schoolers will be planning their BIG Graduation event. They will be discussing, planning, preparing, organising, resourcing and shopping for their big event. More information to follow. **Have you got any ideas to add?**
- Reading and studying our books from our Book Bug Bags



- 7th April – World Health day
- 10th April – National siblings day
- 12th April – International day of human space flight
- 12th April – KingsWellies THIRD birthday party! Cake all round!
- 13th April – International laughter day
- 18th April – International jugglers day
- 22nd April – Tree planting event at Maryculter Woods, 2-4pm. All families welcome.
- 23rd April – St George's day (England)
- 25th April – World Penguin day
- 27th April – Tell a story day. **Bring in your favourite story book from home.**
- 30th April – International jazz day. **Any budding jazz dancers or singers out there who could come in and perform for us?**
- 30th April – National honesty day
- 1st May – Mother Goose day
- Literacy, Numeracy and Health and Wellbeing – LOTS of exciting learning opportunities. Have you seen our home-link activities in reception? Please help yourself to our “sound” and “number bags” which are outside the Wellie Beans room and are available for anyone to borrow. **We will be asking our staff to become Literacy, Numeracy and Health and Wellbeing Champions!**



Parental Consultations

Question of the month April 2018

Each month we strive to self-evaluate our practice because we want to be a better nursery. We also need our parents to give us feedback. Our April 2018 question of the month comes from **How Good Is Our Early Learning and Childcare** and focuses on **Quality Indicator 2.7: Partnerships**. We very much value your feedback.

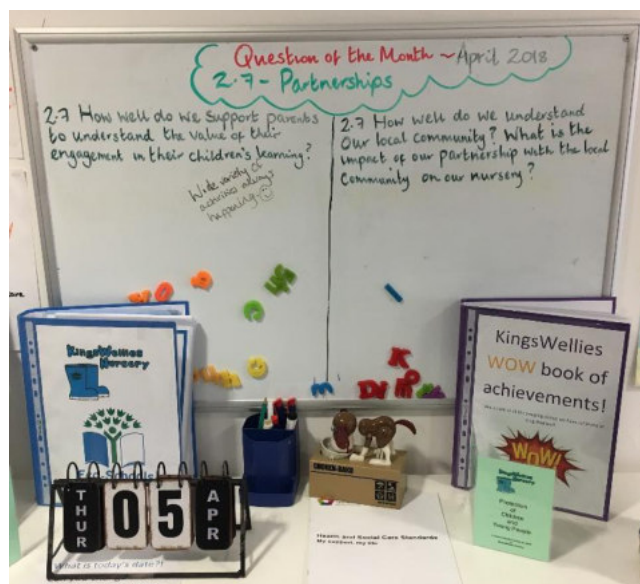
Snack and Lunch Consultation

Many thanks to everyone who responded to this important consultation. Kerry will be meeting with Entier later this month to review our new lunch menus. Marcia is currently reviewing our snack menus. We have taken all of your views in to account and will share both sets of new menus in due course.

We would also really like to encourage our children and parents to be our “snack shopper” each weekend. Please see Ruby for a shopping list and £10 budget. This is a GREAT way to teach your children about literacy and numeracy whilst doing your normal weekly shop.

Prime Four Pond

Please help us to name the pond. Please hand your ideas in to reception.



Outdoor Education Consultation

Please see our attached consultation. We have already consulted with children and staff. We are trying to improve our outdoor education provision therefore your feedback is extremely valuable to us.

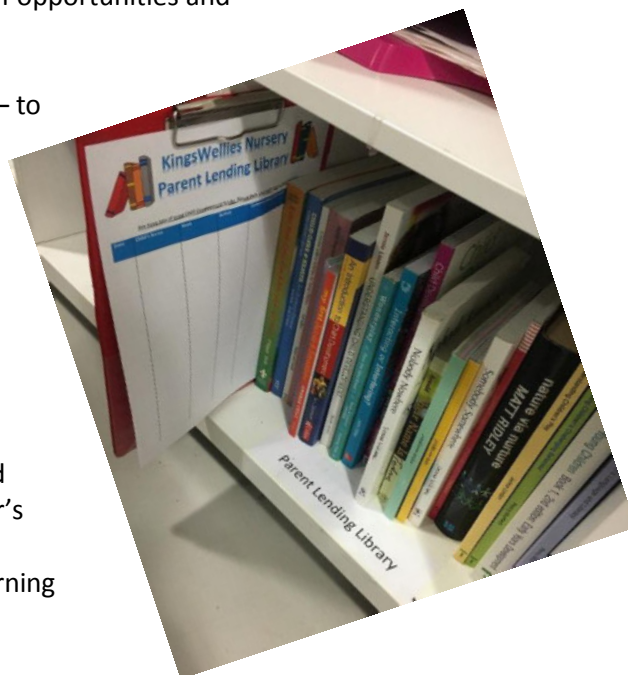
Parental Questionnaires – February/March 2018

Many thanks to all who completed our recent questionnaires. We found your responses extremely informative. Almost all were extremely positive with the vast majority of parents either strongly agreeing or agreeing with all statements. This really made our day. Parents who expressed any concerns with any element of our nursery provision, were contacted individually and all issues discussed in full.

Some parents disagreed with the statements: “KingsWellies give me ideas on how to support my child’s learning at home” and “KingsWellies organises activities where my child and I can learn together.”

In order to support these outcomes, we provide a number of opportunities and resources for parents and learning at home. These include:

- Literacy, Numeracy and Health and Wellbeing bags – to take home
- Kindness / Bucket Filler bags – to take home
- Rumpole and Ziggy weekly diary – to take home
- Snack Shopper – to take home
- Hermione the hamster – to take home
- Curricular home-link activities – to take home (in reception)
- Child lending library – please help yourself to take home any books of your choice
- Parent lending library – lots of interesting books and leaflets on child development, pregnancy, early year's education. Please help yourself (in reception)
- ILD – digital learning diary. Please add your own learning experiences with your child
- Individual Learning Journey folder – to take home
- Book Bug Bags – to take home
- Stay and Play days – opportunities to see what happens in nursery
- Curricular events
- Parent progress meetings
- Curricular leaflets including: writing is fun, environmental print, sharing books, expressive arts, working with wood, literacy, numeracy, block play, art and craft, digital technologies, parental partnerships and outdoor play (in reception and on our website)
- Transition packs and leaflets (outside each room)
- KingsWellies Curricular and Operational Policies (in reception, outside each room and on our website)
- Parent Tips – section in Newsletter
- "Every day is a learning day" – our own web page which contains lots of helpful leaflets, web links and information for parents on how to support your children at home. You can access this at www.kingswelliesnursery.com
- Regular Newsletter and email updates – family events in the local community, useful documents and advice



I hope that you will be able to make good use of these wide range of resources.

KingsWellies Policies of the Month

This month we would like to provide you with the opportunity to review and consult on our Visits and Outings Policy and our Early Learning Opportunities and Play Policy. We hope that you find this information useful. Please give us your feedback and suggestions. Your feedback will shape our future priorities for improvement.

Parent Tips, Ideas and Suggestions

This is a space for parents to communicate with each other. If you have any suggestions, please email us with your ideas so that we can include them in this section of the newsletter.

Parent research suggestion: Emotional Literacy. Lots of really good research on this area which will help us to understand behaviours in our children.

KingsWellies suggestion: Make use of our parent lending library. Lots of helpful tips and ideas!

Parent Training Opportunities

We have teamed up with Morven Medical Solutions to provide medical training for our staff and parents. We are delighted to be able to offer a half day first aid course for parents/carers. This course will cover Basic Life Support for Adults and Children and will be held on a Saturday or Sunday at KingsWellies Nursery. The date will be confirmed.

This course usually costs £45 per person, however Morven Solutions would be happy to charge a discounted rate of £35 per person for the KingsWellies parents. If you are interested in participating in this course, please email Kerryyn as soon as possible. Dates and times will then be arranged, depending on the uptake from parents.

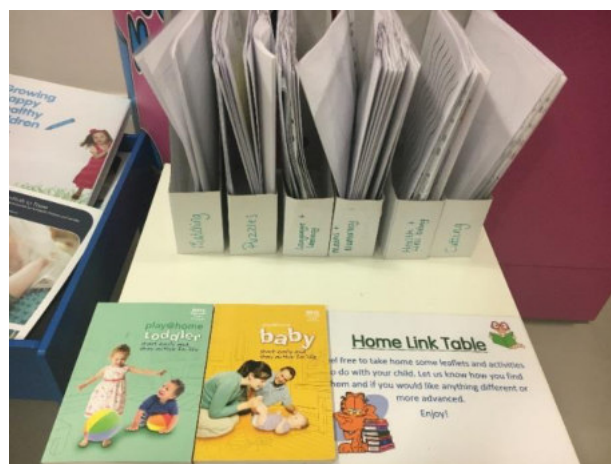
I am also hoping to book an extremely interesting course on Emotional Literacy for both staff and parents to attend. More information to follow.

Parent Progress Meetings / Curricular Event

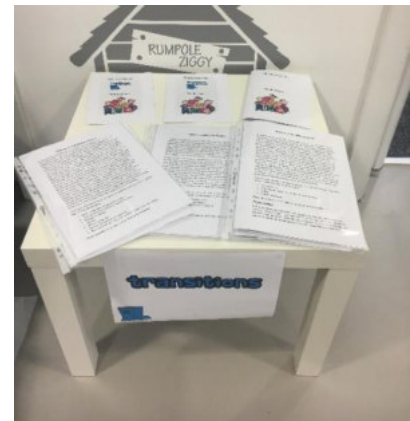
Many thanks to all those parents who recently attended our annual progress meetings with staff. These proved to be extremely useful for both parents and staff. Similar meetings will be held annually and twice yearly for our pre-school children. Please remember that you don't have to wait until parent's night, you can request a meeting at any time.

Look out for our stay and play days in term 4 also (dates to be advised). Please complete and hand in the evaluation form which was given to you on the night. Additional copies can also be found in our Stakeholder Consultation Corner in reception. Many thanks.

Please also log in to your child's ILD to see what they have been achieving. Please contact Kerry if you still require your own unique registration code.



If you would like to take your child's individual learning journey folder home to have a good look at or to add to, please see playroom staff who will be more than happy to oblige. We only ask that you return it within a week and also complete the Evaluation Form at the back.



Comments, Compliments and Concerns

Please give us your feedback – good and bad. It means a lot to us! We only want to keep improving in order to provide the BEST service possible. PLEASE make us your first port of call if you have any comments or concerns. If we work together, we will be able to achieve the very best for all of our children. Many thanks.

We also have Compliments slips available in reception in relation to our staff. The staff work very hard and we all know that it is nice to hear a compliment from time to time. Many thanks to those parents who have already paid staff members a compliment. We are always looking for Workers of the Week and Workers of the Month.

Drive Carefully

Please always drive carefully and reverse park when in our car park. The speed limit is 5 miles per hour at all times. Many thanks.

If you would like this newsletter or any other documentation from nursery translated in to another language or an alternate reading format, please do not hesitate to contact us.



Name: _____

Session: _____

KingsWellies Nursery Life Skills Awards – Purple Awards (Babies)

Purple Award	Successful Learners		Confident Individuals	
	Responsible Citizens		Effective Contributors	
I can identify my own jacket and shoes	I can listen and follow instructions	I can help to tidy up	I have visited places in the community	I am excited about moving to Toddlers
I feel confident in participating in new experiences with peers and teachers	I can complete an obstacle course using co-ordination and balance	I can recognise my own name	I can identify my basic colours	I can identify my basic body parts (i.e. head, ears, nose, feet)
I can do the actions to basic Nursery song/rhyme	I can share nicely with my friends	I usually have a healthy snack	I can wash my hands	I am aware of the room's basic routine
I can say basic small words	I can play alongside others nicely	I can sleep on a sleep mat comfortably	I can...	I can...

Wow! You did it!

Signed: _____

Date: _____

Outdoor Play Area Consultation

1. What do you think of our outdoor play area?
2. What new things would you like to see in our outdoor play area?
3. What do we do well in outdoor education?
4. What could we improve?
5. Have we planned and provided resources for a range of rich outdoor learning experiences across the curriculum?
6. Do we provide opportunities outside for all children?
7. Do we have high expectations of what our children might learn outdoors?
8. Do you have any other suggestions to make our outdoor area more fun and educational for our children?
9. Other comments?

*Please remember that if you have any indoor or outdoor play resources that you no longer require, we would be delighted to have them. Thank you.

Visits and Outings Policy

Published	March 2015 (V1)
Reviewed	March 2016 (V2)
Revised	Session 2017/18



Visits and Outings Policy

At KingsWellies Nursery we offer children a range of local outings including walks and visits off of the premises. We believe that planned outings and visits complement and enhance the learning opportunities inside the nursery environment and extend children's experiences. We always seek parents' permission for children to be included in such outings.

Procedures

Visits and outings are carefully planned using following guidelines, whatever the length or destination of the visit:

- A pre-visit checklist, full risk assessment and outings plan will always be carried out by a senior member of staff before the outing to assess the risks or hazards which may arise for the children, and identify steps to be taken to remove, minimise and manage those risks and hazards. We will endeavour to visit the venue prior to the visit. This will ensure that the chosen venue is appropriate for the age, stage and development of the children
- Written permission will always be obtained from parents before taking children on trips
- We provide appropriate staffing levels for outings dependent on an assessment of the safety and the individual needs of the children At least one member of staff will hold a valid and current paediatric first aid certificate
- A fully stocked first aid box will always be taken on all outings along with any special medication or equipment required
- A completed trip register together with all parent and staff contact numbers will be taken on all outings
- Regular headcounts will be carried out throughout the outing. Timings of headcounts will be discussed in full with the nursery manager prior to the outing
- All staff will be easily recognisable by other members of the group; they will wear the nursery uniform and high visibility vests/jackets
- Children will be easily identified by staff when on a trip by use of a sticker system. The nursery name, number and mobile number will be displayed
- A fully charged mobile phone will be taken as a means of emergency contact
- In the event of an accident, staff will assess the situation. If required, the group will return to nursery immediately and parents will be contacted to collect their child. In the event of a serious accident an ambulance will be called at the scene, as well as parents being contacted. One member of staff will accompany the child to the hospital, and the rest of the group will return to the nursery.

Risk assessment / outings plan

The full risk assessment and outing plan will be completed prior to all trips and outings. Parents will be provided with a copy of this at their request. This plan will include details of:

- The name of the designated person in charge - the outing leader
- The name of the place where the visit will take place
- The estimated time of departure and arrival
- The number of children, age range of children, the ratio of staff to children, children's individual needs and the group size
- The equipment needed for the trip, i.e. first aid kit, mobile phone, coats, safety reins, pushchairs, rucksack, packed lunch, etc.
- Staff contact numbers
- Method of transportation and travel arrangements (including the route)
- Financial arrangements
- Emergency procedures
- The name of the designated first aider and the first aid provision
- Information relating to any individual child's learning and development needs.

Use of vehicles for outings

- All staff members shall inform parents in advance of any visits or outings involving the transportation of children away from the nursery
- The arrangements for transporting children will always be carefully planned and where necessary additional people will be recruited to ensure the safety of the children. This is particularly important where children with disabilities are concerned
- All vehicles used in transporting children are properly licensed, inspected and maintained. Regular checks will be made to the nursery vehicle e.g. tyres, lights etc. and a logbook of maintenance, repairs and services is maintained (where appropriate)
- The nursery vehicle will be kept in proper working order, is fully insured for business use and is protected by comprehensive breakdown cover
- Drivers of vehicles are adequately insured
- All vehicles used are fitted to the supplier's instructions with sufficient numbers of safety restraints appropriate to the age/weight of the children carried in the vehicle. Any mini buses/coaches are fitted with 3-point seat belts
- When we use a mini bus, we check that the driver is over 21 years of age and holds a Passenger Carrying Vehicle (PCV) driving licence. This entitles the driver to transport up to 16 passengers
- When children are being transported, we maintain ratios.

When planning a trip or outing using vehicles, records of vehicles and drivers including licenses, MOT certificates and business use insurance are checked. If a vehicle is used for outings the following procedures will be followed:

- Ensure seat belts, child seats and booster seats are used
- Ensure the maximum seating is not exceeded
- All children will be accompanied by a registered member of staff
- No child will be left in a vehicle unattended
- Extra care will be taken when getting into or out of a vehicle
- The vehicle will be equipped with a fire extinguisher and emergency kit containing warning triangle, torch, blankets, wheel changing equipment etc.

Lost children

In the event of a child being lost, the Lost Child Procedure will be followed. Any incidents or accidents will be recorded in writing and the Care Inspectorate will be contacted and informed of any incidents.

There may be opportunities for parents to assist on outings. The manager will speak to parents prior to the visit regarding health and safety and code of conduct.

Early Learning Opportunities

&

Play Policy

Published	March 2015 (V1)
Reviewed	March 2016 (V2)/Sept 2017 (V3)
Revised	Session 2017/18



Early Learning Opportunities and Play Policy

Curriculum and Care

Daily life is bursting with many learning opportunities for your child right from the moment of birth. At KingsWellies Nursery, we believe that every day is a learning day. Even the most routine tasks can lead to learning which is not only enjoyable, but helps to give your child the very best start in life.

At KingsWellies Nursery we recognise that children learn in different ways and at different rates and we plan for this accordingly. Our aim is to support all children attending the nursery to attain their maximum potential within their individual capabilities.

We provide a very positive play environment for every child. This is to ensure that they have the opportunity to develop good social skills and an appreciation of all aspects of this country's multi-cultural society. We also plan learning experiences to ensure, as far as practical, there is equality of opportunity for all children and a celebration of diversity.

We maintain a personalised record of every child's development, showing their abilities, progress, interests and areas needing further staff or parental assistance.

Our staff will help your child to enjoy learning by:

- including your child in everyday tasks and making them fun!
- making opportunities for choices, taking responsibility, making decisions and solving problems.
- providing a safe and stimulating environment in which your child feels happy and secure.
- showing we are interested in your child's learning. We will ask questions, listen and give lots of praise when it is appropriate.
- using new and familiar words to extend and enrich your child's vocabulary, understanding and awareness of sounds and language development.
- showing your child how to play, share, take turns, make friends and develop positive relationships.
- providing stimulating and exciting opportunities to engage your child's interest and imagination both indoors and out.
- encouraging your child to reach their full potential!

Learning through play

Play is a fundamental part of childhood. Our role at KingsWellies is to enable and facilitate play. At KingsWellies, the principles of play will underpin and support all of our policies and programmes for our children. KingsWellies children will be able to experience high-quality, stimulating play experiences as part of their daily lives.

KingsWellies Nursery Programme

Each child at KingsWellies is involved in a broad, balanced curriculum suited to their individual needs, interest and stage of development. At some activity areas they will work on their own, at others in a small group or larger group, sometimes with an adult and sometimes without.

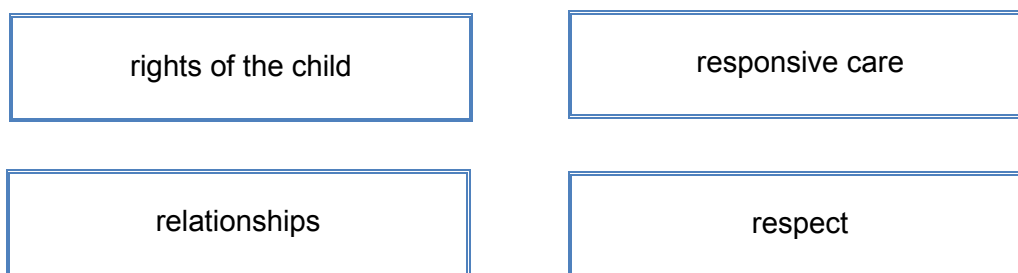
The children choose what they want to do and the adult supports their learning, ensuring that they have breadth and balance. By observing your child at free play and in a group situation, we are able to plan and provide appropriate models of play for each child's development.

It is our intention to assess all children in the nursery. We will use the information gathered from the assessments to review our curriculum so that it is targeted to meet the individual needs of your child.

Pre-Birth to Three: Positive Outcomes for Scotland's Children and Families

KingsWellies Nursery will follow the national guidance set out in Pre-Birth to Three: Positive Outcomes for Scotland's Children and Families, whilst working with our youngest children. This national guidance sets the contexts for high-quality care and education. It will also ensure a smooth and coherent transition for all children as they begin to engage with Curriculum for Excellence 3-18

The four key principles are:



At KingsWellies, each of our younger children will have a Key Person who will offer security, reassurance and continuity and who will be responsible for feeding, changing and comforting that child.

Curriculum for Excellence 3-18

Whilst at KingsWellies, your child will learn through Curriculum for Excellence which is the curriculum used throughout Scotland. The Early Level provides a framework for children's learning in the pre-school years and in Primary 1. Curriculum for Excellence places a strong emphasis on the development of health and wellbeing, literacy and numeracy.

We implement the Curriculum for Excellence set by Education Scotland that sets standards to ensure all children learn and develop well. We support and enhance children's learning and development holistically through play-based activities.

We view all aspects of learning and development and ensure a flexible approach is maintained, which responds quickly to children's learning and developmental needs. We develop tailor-made activities based on observation which inform future planning of adult-led and child-initiated opportunities both indoors and outdoors.

We value child-led play and ensure we promote this through providing activities that are flexible, take account of ages, development needs and interests. We know that activities provided by staff will allow children to enjoy organised and free play including quiet times.

Health and wellbeing

At KingsWellies, health and wellbeing is about learning how to lead healthy and active lives, whilst becoming confident, happy and forming friendships and relationships with others that are based on respect.

Literacy

Literacy is an essential part of our everyday lives. It helps us to understand and interpret our world through what we hear, see, say, write and read. Early literacy skills start with babies discovering that they can communicate their needs through their first sounds, facial expressions and body language.

Numeracy

Numeracy is about counting and numbers as well as understanding measurement, money, weight, an awareness of time and how to handle information. It is important for simple tasks, from pairing your socks to paying for your shopping.

Other curricular areas

At KingsWellies Nursery, we will recognise the importance of health and wellbeing, literacy and numeracy as key to building our curriculum. We will also focus on developing understanding of the expressive arts, religious and moral education, sciences, social studies and technologies.

Outdoor learning

At KingsWellies the children will be encouraged to get moving indoors and outdoors in all weathers. Learning to enjoy the outdoors in our Scottish climate will help the KingsWellies children to grow and develop into healthy and confident adults. A huge range of activities, resources and games will be provided in our large and unique outdoor play environment.

Nursery Curriculum

Our Nursery Curriculum is fully detailed within our KingsWellies prospectus and also within our curriculum policies.

With our children aged from 3-5 years, we follow the 'Curriculum for Excellence'. The Early Level provides a framework for children's learning in the anti-pre and pre-school years and in primary 1. The eight curricular areas are:

- Expressive Arts
- Health and Wellbeing
- Literacy and Languages
- Numeracy and Mathematics
- Religious and Moral Education
- Sciences
- Social Studies
- Technologies and ICT

Building the Ambition

KingsWellies Nursery will also use the **National Practice Guidance on Early Learning and Childcare Building the Ambition (2014)** as our core guidance to support us in providing a seamless learning journey from birth to starting school.

We offer all of our children active learning experiences, regardless of age and stage by:

- Providing a safe and stimulating environment in which children feel happy and secure.
- Providing opportunities to engage the children's interest and imagination.
- Encouraging positive attitudes to self and others.
- Extending the children's abilities to communicate their thoughts, feelings and ideas in a variety of ways.
- Encouraging children to reach their full potential.
- Focusing on the development of Literacy, Numeracy and health and Wellbeing skills during all learning opportunities.

During your child's time spent at KingsWellies Nursery, we aim to provide them with rich and varied opportunities to develop into successful learners, confident individuals, responsible citizens and effective contributors.

A variety of free-play areas will be set up in each playroom. These will include activities involving:

- Mark-making, drawing and writing
- Books, puppets and listening
- Puzzles and fine motor skill activities
- Building and construction
- Small world play
- Sensory and manipulative skills
- Number and maths
- Exploring and investigating
- Sand and water
- Creative area for painting, modelling, making woodwork, play dough
- Imaginative play including Kitchen and house area
- Music and drama
- Treasure baskets
- Loose materials play using everyday objects
- Interactive resources including smartboard and new technologies
- Cooking and baking
- Planting and growing
- Enterprise and problem solving
- Role play and dressing up

We acknowledge parents as primary educators and encourage parental involvement as outlined in our Parents and Carers as Partners Policy. We build strong home links in order to enhance and extend children's learning both within the nursery environment and in the child's home.

We share information about Curriculum for Excellence with parents and signpost them to further support via the following website:

www.educationscotland.gov.uk

Our guarantee to you

At KingsWellies, you can be confident that:

- staff are flexible and responsible to your child's personal, emotional, educational and physical needs
- we will provide your child with a range of rich and varied learning opportunities which will help them to develop into successful learners, confident individuals, responsible citizens and effective contributors
- your child will experience and choose from a wide range of high-quality programmes and activities that are planned, designed, evaluated and implemented by staff, taking account of national and local guidelines
- we will promote ambition and high expectations for every child within our care.

Policy on Play

Article 31 of the UN Convention on the Rights of the Child recognises that every child has the right to rest and play and to have the chance to join a wide range of activities.

Introduction

KingsWellies Nursery recognises that play is central to the health and wellbeing of our children and to enjoyment in their lives. Access to high quality play opportunities leads to the development of confident young people better able to lead their own communities and make a full and active contribution to society.

This Play Policy makes a commitment to all children and young people in KingsWellies to support their right to play regardless of their needs, background or abilities. It acknowledges the significance of children's rights in the United Nations Convention on the Rights of the Child which was approved by the UK Government in December 1991 and adopted by Aberdeen City in 1996.

The purpose of the Play Policy is to improve the quality of current and future play opportunities in KingsWellies and establish links between play and other local and national policies and strategies.

KingsWellies' vision is to develop high quality innovative and inclusive services in partnership with the community, children and young people and all agencies involved in the delivery of play.

A key feature of this Play Policy is to work together with our existing and future partners to best meet the needs of children, families and communities.

KingsWellies will make a commitment to see, hear, listen and respond to children playing in our communities therefore encouraging healthy community activity with active and positive contributions from all generations.

The Play Policy shows the value of freedom to play in the lives of our children. It is our responsibility to ensure the freedom to play is a right upheld in KingsWellies.

Rationale

Play is an essential part of a happy, healthy childhood and; 'when children play their brains do two things: they grow and become organised and usable.' (Hughes 2013)

Furthermore, the right to play is enshrined in the UN Convention on the Rights of the Child. All children and young people should have play experiences as part of their daily lives. KingsWellies Nursery recognise the vital role of play in supporting children's learning and development. At KingsWellies, we aim to provide a wide variety of quality play experiences for our children.

Definition of Play

Play is the stimulus for physical, intellectual, emotional and social development – it is fundamental to human development. Children play for enjoyment and creative expression, but through play they learn about the world around them. Play is fun and is an essential part of everyone's life.

What is Play?

Play comes in many forms. It can be active, passive, solitary, independent, assisted, social, exploratory, educational or just for fun! Moreover, it can happen indoors or outdoors. It can be structured, creative, messy, entirely facilitated by the imagination, or can involve using the latest gadgets and technologies.

From the earliest days and months, play helps children to learn to move, share, negotiate, investigate, manipulate, take on board the points of view of others and cultivate many more skills. It remains equally important throughout infancy, childhood, the teenage years, through adolescence and beyond into adulthood. Play plays a crucial part at all ages, stages and abilities.

A Vision of Play

KingsWellies is a nursery where all children and young people are empowered to play, are encouraged to direct and define their own play spaces and have access to high quality play opportunities and resources.

KingsWellies is a great place to Play.

Significance of Play

In order to support children's play opportunities and promote the benefits of play within the context of their lives, it is important to understand that there are competing elements for children's leisure time and other challenges that can make play opportunities difficult to deliver, these include;

1. **The time spent on electronic games and watching television rather than active play.**
Children playing alone in front of an electronic device has become the norm for a generation. Research shows that children spend a much higher proportion of their time inactive than in years past. This has been linked to the rise in obesity in childhood – we seek to challenge this and promote children's imaginations as well as their physical and mental health and wellbeing by encouraging them towards active, preferably outdoor play.
2. **The importance of the suitability, attractiveness and children's feelings of "ownership" relating to where they play.**
Many play spaces are not clean nor attractive, and unfortunately some are unsafe. This makes getting to a quality, clean play space is difficult for many young people, parents and carers. Guidance states that children should be no more than 400m from local play area, however these can be of variable quality. Parents, children and communities should be supported to improve, develop and enjoy their play spaces.
3. **The weather.**
A shift in attitude towards the weather and outdoors is needed. This teamed with education and supported about obtaining and using appropriate outdoor clothing is part of making all weather outdoor play is more attractive. "There is no such thing as bad weather – only inappropriate clothing."

Play at KingsWellies Nursery

All learning environments need "free play". This is commonly defined as "behaviour that is freely chosen, personally directed and intrinsically motivated". This form of play has the potential to contribute powerfully and positively to some of the most significant areas of nursery, school and future life. At KingsWellies Nursery, we recognise that play supports the development of social skills and collaboration. It stimulates physical activity and the development of important physical competencies.

It encourages creativity, imagination and problem solving. When children have access to natural spaces for play, it fosters a sense of close connection with and respect for nature.

Learning through play is widely acknowledged as a key component of good practice in the early years, both indoors and outdoors. At KingsWellies Nursery, we use our outdoor and indoor space as well as the local area to provide children with opportunities for structured and free play activities.

In order to support play effectively, KingsWellies Nursery staff are sensitive about the timing and nature of interventions and interactions. We work with the children to ensure that they have the time, space and freedom to initiate, plan, lead and conclude their own play.

KingsWellies Nursery Play Policy Objectives

- * Provide play opportunities within the nursery that are accessible for all children, high quality, imaginative, challenging, well maintained and safe.
- * Ensure children and young people with disabilities have access to quality play opportunities.
- * Promote positive attitudes towards outdoor play in both adults and children.
- * Promote use of indoor and outdoor play areas, parks and open spaces.
- * Provide information to planners and developers so that play is considered during community planning.
- * Ensure that council policies and strategies support the development of play opportunities.
- * Consult and provide feedback to children and young people on play issues.
- * Ensure that relevant training and qualifications are available to those involved in play services.
- * Whenever appropriate, play opportunities should be delivered using partnership approaches which include, actively involve, local schools and communities.

Every day is a learning day

At KingsWellies Nursery, our philosophy is that 'every day is a learning day.' We recognise that daily life is bustling with many learning opportunities for your child right from birth. Through lots of high quality play opportunities, we will support our children to learn about the world, develop their interests, feel involved, and become engaged and happy..... And all the time, we will be making every day a learning day!

Curriculum for Excellence

Outcomes and Experiences that Relate to Play

I know that friendship, caring, sharing, fairness, equality and love are important in building positive relationships. As I develop and value relationships, I care and show respect for myself and others. HWB 0-05a	I am developing a sense of size and amount by observing, exploring, using and communicating with others about things in the world around me. MNU 0-01a	Throughout my learning, I share my thoughts with others to help further develop ideas and solve problems. TCH0-11a
I understand that people can feel alone and can be misunderstood and left out by others. I am learning how to give appropriate support. HWB 0-08a	I have experimented with everyday items as units of measure to investigate and compare sizes and amounts in my environment, sharing my findings with others. MNU 0-11a	Within real and imaginary settings, I am developing my practical skills as I select and work with a range of materials, tools and software. TCH 0-12a
I make full use of and value the opportunities I am given to improve and manage my learning and, in turn, I can help to encourage learning and confidence in others.HWB 0-11a	I have spotted and explored patterns in my own and the wider environment and can copy and continue these and create my own patterns.MTH 0-13a	Through discovery, natural curiosity and imagination, I explore ways to construct models or solve problems. TCH 0-14a
I value the opportunities I am given to make friends and be part of a group in a range of situations.HWB 0-14a	I enjoy exploring and playing with the patterns and sounds of language and can use what I learn. LIT 0-01a/Lit 0-11a/Lit 0-20a	Throughout my learning, I explore and discover different ways of representing my ideas in imaginative ways.TCH 0-15a
I am developing my understanding of the human body and can use this knowledge to maintain and improve my wellbeing and health. HWB 0-15a	As I listen and talk in different situations, I am learning to take turns and am developing my awareness of when to talk and when to listen. LIT 0-02a / ENG 0-03a	As I play and learn, I am developing my understanding of what is fair and unfair and why caring and sharing are important.RME 0-09a
I am learning to assess and manage risk, to protect myself and others, and to reduce the potential for harm when possible.HWB 0-16a	I have the freedom to choose and explore how I can use my voice, movement and expression in role play and drama.EXA 0-13a	As I explore stories, images, music and poems, I am becoming familiar with the beliefs of the world religions I am learning about.RME 0-04a
I know and can demonstrate how to keep myself and others safe and how to respond in a range of emergency situations.HWB 0-17a	I use drama to explore real and imaginary situations, helping me to understand my world.EXA 0-14a	I make decisions and take responsibility in my everyday experiences and play, showing consideration for others.SOC 0-17a
I know and can demonstrate how to travel safely.HWB 0-18a	Working on my own and with others, I use my curiosity and imagination to solve design problems.EXA0-06a	Through everyday experiences and play with a variety of toys and other objects, I can recognise simple types of forces and describe their effects. SCN 0-07a
In everyday activity and play, I explore and make choices to develop my learning and interests. I am encouraged to use and share my experiences.HWB 0-19a	I explore and discover the interesting features of my local environment to develop an awareness of the world around me. SOC 0-07a	Through creative play, I explore different materials and can share my reasoning for selecting materials for different purposes. SCN 0-15a
I am learning to move my body well, exploring how to manage and control it and finding out how to use and share space.HWB 0-21a	I explore and appreciate the wonder of nature within different environments and have played a part for caring for the environment.SOC 0-08a	I am aware of my own and others' needs and feelings especially when taking turns and sharing resources. I recognise the need to follow rules. HWB 0-23A
I am developing my movement skills through practice and energetic play. HWB 0-22a	I am enjoying daily opportunities to participate in different kinds of energetic play, both outdoors and indoors.HWB 0-25a	