

# newsletter



**"Together we make a family!"**



Follow us on Instagram and like us on Facebook!

Two great ways for you to keep up to date with all the latest news from the Wellies Gang!

**Hello Spring! We have been soooooooo busy already this year and have lots more planned during term 4.**

## **Easter Celebrations**

We have been very busy celebrating all aspects of Easter and have lots more planned for Spring. We have made Easter bonnets, painted daffodils, painted Spring flowers, pressed Spring flowers, made lots of chocolate treats, found out about the lifecycle of a chick, researched the life cycle of frogs, undertaken Easter scavenger hunts, found out about caterpillars, butterflies and bunny rabbits, released our own butterflies, made lots of beautiful arts and crafts, baked bread and made lovely Easter cards.



We also had great fun painting, decorating and rolling our eggs down the Prime Four "Mount Everest" hills beside the nursery. We also learnt all about the Easter story and about why we celebrate this very important event.



### What else have the Wellies Gang been up to?

Chinese New Year, fun with our Therapets (Tony and Patsy), looking after our hamster, Bucket Fillers, Robbie Burns Day, national kindness day, Makaton training, pancake day, Valentine's Day, random acts of kindness day, national anthem day, minibeast hunts, World Down Syndrome Day, meeting our Aberdeen Friday Friends Group, visits from ChildSmile, puddle-jumping, celebrating red nose day, collecting tadpoles, World Book Day, Scholastic book fair, enjoyed picnics, being Eco Warriors, visits to the park,

supermarkets, QueensWellies, Dobbies and the library, Mother's Day, working with our extra-curricular teachers and LOTS more.....

### Health and Wellbeing

For more ideas on what you can do with your child at home to promote health and happiness, you can download lots of activity guides from [www.ndna.org.uk/healthy](http://www.ndna.org.uk/healthy)



We LOVED having Megan in to work with us and to tell us all about National Down Syndrome Day. We had great fun sorting and matching odd socks, making sock puppets, designing our own trendy socks, counting socks and learning why it is good to be different! We have also loved meeting up with our Aberdeen Friday Friends Group and developing excellent partnership working across our communities. If any parents, grandparents or friends would like to come in to talk to us about their families, cultures or memories; we would LOVE to welcome you with open arms. Please just get in with our admin team.

We have been also been learning all about road safety, kitchen safety, bus safety, stranger danger, how to brush our teeth properly, good hand hygiene, healthy food choices, what to do in a Fire Drill, how to phone 999 in an emergency, our families and friendships, respecting rules and routines, being GOOD bucket fillers and talked lots about our emotions and keeping ourselves safe.

We have also LOVED our Grow Well Choices project with Lisa where we have been learning all about making healthy life choices.



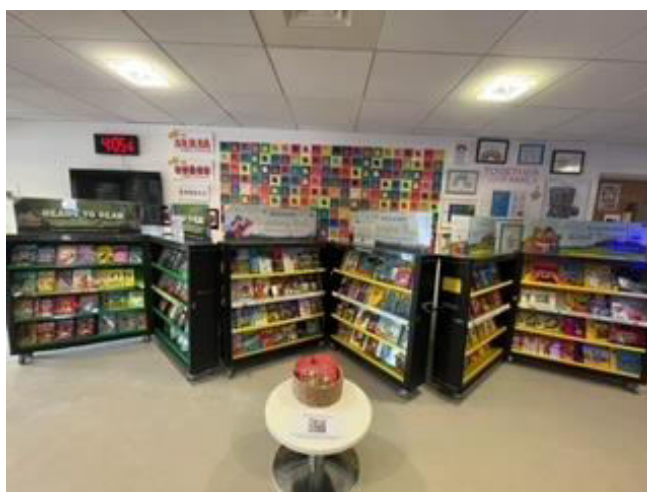


### Outdoor Education

Our Outdoor Committee will be working hard with Scott and AJ to improve our outdoor education area. This is an ongoing project. Laura and all of the Managers have lots of exciting ideas for our outdoor areas so will be working hard to ensure that it is awash with lots of literacy, numeracy and health activities. Please give us your feedback on how we can continue to improve these very important areas. If any parents, grandparents or friends would like to support us with our Spring / Summer planting projects, please let us know. We will be planting up our old wellies, hanging baskets, pots and allotments. We are really excited to get going with this.

### Scholastic Book Fair

We raised a Whooping £173.30 towards new books for the nursery. Huge thank you to everyone who purchased a book from us. The children are all busy choosing and ordering their new books, as we speak.



### KingsWellies 9<sup>h</sup> Birthday

We are so proud to say that KingsWellies will be 9 years old on the 15<sup>th</sup> April 2024. We can hardly believe it! A LOT has happened in the past 9 years! A huge thank you to all of our amazing staff. We really cannot underestimate how hard they all work to ensure that our Wellies children are safe, happy, nurtured and learning.

A very special thanks also goes to Laura, Marcia and Emma who have all been with us from day one when

we opened on 15<sup>th</sup> April 2015. That level of commitment and loyalty is almost unheard of. Huge thanks to these very special ladies.

Look out for our birthday celebrations on Facebook.

### Staffing Update

Welcome to a number of new staff who have all recently joined us as support staff and practitioners within our rooms. Staff photos can be seen up in our reception areas. We are delighted to welcome such dedicated staff to our teams. Please also see our Facebook posts where we keep you abreast of staffing changes and all that is happening on a day-to-day basis across all rooms within Wellies Nurseries.

We realise that there have been lots of staff changes recently. We have had to move some staff to new rooms in order to ensure that we have a good balance of old and new staff in each room. We have considered all room moves very carefully. However, our aim is to ensure consistency as much as possible for our children, in their everyday lives. Although some children may experience changes in their Key Workers, we will ensure that this is done very sensitively and over time. Staff will keep you abreast of all changes.

We are also continuing to recruit for our new West End Wellies Nursery so you will see lots of new faces over the next few months, as we train all staff ready for opening.





### **Children as Active Learners: Books for bereavement, loss, grief, stress, worry and separation**

We have lots of different books available in nursery. Please just see a member of staff if you would like to borrow any of them. We also have child lending libraries, parent lending libraries, kindness bags, bucket filler bags, literacy bags, numeracy bags, health and wellbeing bags, hamster bags and Patsy / Tony bags which can all be borrowed and used at home to further develop your child's learning and engagement. Please just ask a member of staff who will be more than happy to help.

Vicki from the Wellie Jellies room, has also recently very kindly made up a new digital resource to support those children who are transitioning to P1. This information will be sent home soon to gauge the interest of these parents. THANK YOU Vicki!



### **What will we be learning and thinking about in term 4?**

**Over the next few weeks, we will be focusing on a variety of topics in our playrooms. These will include:**

- KINDNESS – Are you a bucket filler or a bucket dipper? We will be working on promoting Kindness
- Writing our names and learning lots of rhyming words
- Improving our outside environments
- Improving our inside environments
- Discussing our new nursery and what WE would like to see there
- Developing our Enterprise in Education skills
- Working with our amazing Extra-Curricular teachers – **Gym Bunnies, Moo Music, Kids Rock, Chef**

**Lisa, Flashdance, French, Yoga Kids, Rugby Totts. Please contact our Admin team if you would like your child to join Gym Bunnies, Flashdance, Yoga Kids or Rugby Totts. These are all AMAZING additional experiences for your children to enjoy within their nursery day**

- Child-led improvement groups – Our Eco Group, Kindness Group, Playground Improvement Group, Bucket Filler Group, Charities Group and Graduation Group will keep working hard to improve our nursery.
- Allotment planting, wellie planting, planting our pots and hanging baskets – **would any parents or grandparents be willing to come in to help us with this?**
- Life cycles



• 2D and 3D shape – **lots of junk modelling letting our imaginations run wild. Please give us your household junk!**

• Seasons, Summer and sun safety – **please remember your sun cream!**

• The Scottish Daily Mile - we aim to jog, run or walk for up to 15 minutes every day!

• LOTS of Reflection Time in our interest / colour groups; talking about our learning and what we would like to learn with our key workers then reflecting this is our floorbooks

• Working on our floorbooks, talking tubs and thinking trees

• Outdoor play – barbeques, pizza oven, mud kitchens, sensory walks, environmental print walks, visiting the nature reserves, water walls, minibeast hunts, dens, forest schools, Eco Schools, Mount Everest and lots more

- Grow well choices – making healthy decisions
- Makaton – we are getting good at using this sign language! Simone is an amazing teacher!
- Transport and Road Safety
- Reading and studying our books from our Book Bug Bags
- Visits out and about in the community – using the bus
- Visits from our new P1 teachers
- Visits to some of our schools
- Rules and routines
- Getting ready for school
- 3<sup>RD</sup> April – World Autism Month. We have an excellent Autism Toolbox that we will send out to all families
- 10<sup>th</sup> April – National Siblings Day
- 12<sup>th</sup> – Space Flight Day
- 15<sup>th</sup> April – KingsWellies 9<sup>th</sup> Birthday Party!
- 22<sup>nd</sup> April – Earth Day







- 23<sup>rd</sup> April – St George's day (England)
- 25<sup>th</sup> April – World Penguin day
- 27<sup>th</sup> April – Tell a story day
- 29<sup>th</sup> April – International dance day
- 30<sup>th</sup> April – International jazz day.
- 30<sup>th</sup> April – National honesty day
- 1<sup>st</sup> May – World Laughter day
- 1<sup>st</sup> May – Mother Goose day
- 7<sup>th</sup> May – Space day
- 10<sup>th</sup> May – National vegetarian week
- 14<sup>th</sup> May – World migratory bird day
- 15<sup>th</sup> May – International day for families

- 20<sup>th</sup> May – World Bee day
- 21<sup>st</sup> May – KW Quality Assurance Visit from Aberdeen City Council
- 23<sup>rd</sup> May – World turtle day
- 24<sup>th</sup> May – Scavenger hunt day
- 25<sup>th</sup> May – National tap dance day
- **27<sup>th</sup> May – Stay and Play at KingsWellies, Babies and Totts, 2.30pm until 4pm**
- **28<sup>th</sup> May – Stay and Play at KingsWellies, Beans and Jellies, 2.30pm until 4pm**
- 29<sup>th</sup> May – National biscuit day
- 30<sup>th</sup> May – Bike week
- 31<sup>st</sup> May – No tobacco day
- 1<sup>st</sup> June – World milk day
- 1<sup>st</sup> June – Say something nice day
- **4<sup>th</sup> June – Stay and Play at QueensWellies, Wellie Bumbles, 2.30pm until 4pm**
- **5<sup>th</sup> June – Stay and Play at QueensWellies, Wellies Bees, 2.30pm until 4pm**
- 5<sup>th</sup> June – National environment day





- 6<sup>th</sup> June – QW quality assurance visit from Aberdeen City Council
- 7<sup>th</sup> June – National food safety day
- 8<sup>th</sup> June – Global day of parents
- 8<sup>th</sup> June – World ocean day
- **8<sup>th</sup> June – Graduation Photo day for our 2024 graduates**
- 13<sup>th</sup> June – Healthy eating week
- 15<sup>th</sup> June – Nature photography day
- 16<sup>th</sup> June – Father's day
- 19<sup>th</sup> June – National picnic week
- 20<sup>th</sup> June – Longest day
- 21<sup>st</sup> June – International day of yoga
- 21<sup>st</sup> June – World giraffe day
- 21<sup>st</sup> June – Make music day
- 29<sup>th</sup> June – Children's art week
- 29<sup>th</sup> June – International mud day
- 1<sup>st</sup> July – International joke day
- **20th July – Class of 2024 Graduation party. Information has already been sent home**
- Literacy, Numeracy and Health and Wellbeing – LOTS of exciting learning opportunities.

### West End Wellies Nursery

As you are aware, we have recently purchased a new nursery building in Mannofield, Aberdeen. This is right next door to both the Squash Club and Aberdeenshire Cricket Club. Work has commenced on our new building and we are hoping to fully open around August / September 2024. We are very excited for this new opportunity. Please contact us if you would like to know more about booking a space within West End Wellies. We will keep you updated with all progress.

We have large floorbooks in both receptions showing "before" photos, plans and ideas for improvement to West End Wellies. Please give us your ideas, we want to be as creative as possible.

**We currently have spaces available for all ranges at KingsWellies, QueensWellies and West End Wellies. Please contact the office for additional information on 01224 741175 or [admin@kingswelliesnursery.com](mailto:admin@kingswelliesnursery.com)**







### **Wellies Nurseries – Updated Website**

Please see our updated website on [www.kingswelliesnursery.com](http://www.kingswelliesnursery.com)

You will find lots of details about our new West End Wellies Nursery, as well as videos of all of our rooms, in each Nursery. Please provide us with feedback on our website. This helps us to continue to improve. Please also LIKE and COMMENT on our Facebook posts. Staff take a great deal of time on a weekly basis to post so that you can see what your children are up to on a daily basis.

### **Staff Training Update**

All staff continue to work through our Collegiate and Continual Professional Development Calendars and are also able to access a great number of courses and training opportunities through digital formats. Training which is ongoing during this term includes:

- Leadership at all levels
- Management and Leadership – ALL Supervisors
- SSSC Leadership Badges – ALL SMT and Supervisors
- Gender Bias
- Trauma Informed Practice – training with Aberdeenshire Council Educational Psychologist for ALL staff on 25/4/24
- Practical management skills and expectations
- Outdoor learning
- Learning through Play
- Azillo Training
- SVQ Training – Children and Young People
- Child-led play
- Curriculum for Excellence
- My Active World
- Growing My Potential
- Realising the Ambition: Being Me
- Children's Panel Training (ongoing) – Kerry and Emma Melvin
- Communication in Young Children
- Impulse and Emotional Regulation
- Child Protection and Safeguarding



### Parent Engagement Events

We would like to invite our parents to join us for a variety of parent engagement events this term. Please also be reminded that all parents can request a meeting with your child's Key Worker / Supervisor at ANY time. Please just contact our Admin team who will arrange this for you as a matter of priority. We have also asked all of our P1 parents whether they would like to book in a meeting prior to their child leaving to attend school. Please let us know by 12/4/24 so that we can get these scheduled in for you.

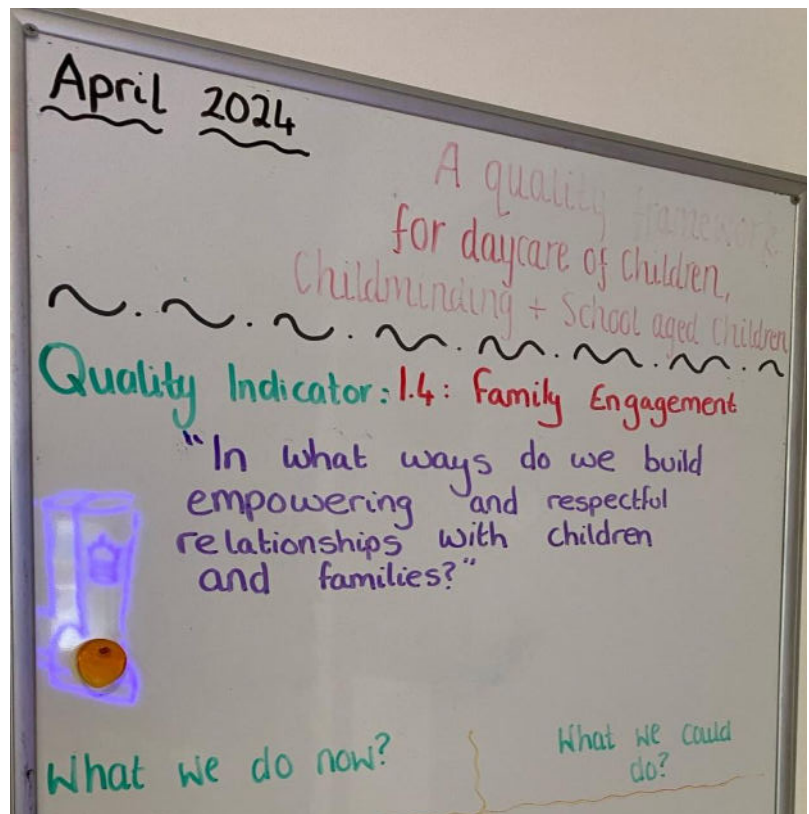
**20/07/2024 – Class of 2024 Graduation Party**

**Stay and play days – Dates as above**

### Parental Consultations

#### Question of the month April /May 2024

Each month we strive to self-evaluate our practice because we want to be a better nursery. We also need our parents to give us feedback. Please take five minutes to add to our self-evaluation boards in reception. Many thanks – we very much value your feedback.



### Wellies Nurseries Policies of the Month

This month we would like to provide you with the opportunity to review and consult on our Outdoor Education Policy and our Sun Care Policy. We hope that you find this information useful. Please provide us with feedback.



## Parent Tips, Ideas and Suggestions

This is a space for parents to communicate with each other. If you have any suggestions, please email us with your ideas so that we can include them in this section of the newsletter.

*Wellies suggestion: Think about mental health and how to be consistently kind and respectful to ALL those around you. Can you do a good deed every day? Make use of our lending bags and libraries to have some fun with your children at home.*

## Comments, Compliments and Concerns

Please give us your feedback – good and bad. It means a lot to us! We only want to keep improving in order to provide the BEST service possible. **PLEASE make us your first port of call if you have any comments or concerns. PLEASE don't go directly to the Care Inspectorate – SPEAK TO US FIRST! If we work together, we will be able to achieve the very best for all of our children. Many thanks.**

## Drive Carefully

Please always drive carefully and reverse park when in our car park. The speed limit is 5 miles per hour at all times. Many thanks.

## Absences

Please call the nursery by 10am to inform us if your child won't be in that day. This is in line with our Child Protection and Health and Safety Policies. Please ALWAYS sign your child(ren) in and out. Registers are outside each room.



## P1 Transition

We have around 60 children who will be leaving us in July/August to go to P1.

These children will come from Wellie Beans, Wellie Jellies and Wellie Bees. We have lots planned to make this transition process as easy for them (and parents) as possible. This is a very exciting time for them and we ask all parents to be positive and enthusiastic. Activities include:

- Visits to their own schools (schools to provide dates)
- Visits by their new teachers to Wellies Nurseries (we have already invited them all)
- Visits to Kingswells School and Playground
- Practicing how to line up, get our own coats on and zip them up, change our shoes, pack our bags and eat our play piece independently

- Can we write our own names? Can we recognise our names? Can we hold a pencil?
- Developing our independence and resilience
- Can we use the toilet independently and wash and dry our hands by ourselves?
- Working with our extra-curricular teachers to develop lots of new skills
- Completing our Wellies Life Skills Awards
- Bus journeys and lots of community visits
- Road safety and stranger danger talks
- Focus on Literacy, Numeracy and Health and Wellbeing
- School Uniforms and changing independently for PE
- Rules, Routines, Boundaries and Friendships
- Looking at our school websites with our friends



- Wellie Beans, Wellie Jellies and Wellie Bees spending lots of time together to discuss P1 and preparation for school
- Individual Learning Journeys sent to each school before the end of term
- Lots of "School" stories and "School" topic activities
- Key Workers to contact each school to pass on all relevant individual information
- Parent meetings with our Key Workers / Supervisors
- Stay and Play dates for parents to join us
- Learning Packs / bags and libraries available to take home
- Digital Learning packs sent home – THANK YOU Vicki
- Parents invited to visit each school (schools to provide dates)
- Environmental print walks
- Graduation!! We can't wait for our Graduation committee to start planning the party of all parties!

Please let us know if we have missed anything. Have you got any other ideas as to how we can make this exciting process as easy and as smooth as possible?





### **The Prince's Trust and Wellies Nurseries - Partnership Working**

The Prince's Trust helps people aged 11 to 30 to build confidence, get a job or launch a business. We are delighted to have recently begun an excellent partnership with The Prince's Trust whereby we have welcomed young people into our nurseries. This has helped THEM to grow in confidence, try new things, meet new people, learn from people who have worked their way up and build essential skills for life and work. It has helped US by providing us with future employees who are passionate about their careers in childcare and who have come in and WOWED us as employers. We are delighted to have already welcomed two new employees to Wellies Nurseries as a direct result of this excellent partnership opportunity.

We also continue to work in very close partnership with Working Rite Youth Employment Charity, Winning Scotland and NESCOL. Through all of these organisations we are able to provide

employment opportunities for young people throughout the North East.

### **Autism Toolbox**

Please find attached the link to an excellent Autism Toolbox. This website is full of activities, not just related to Autism but to a range of additional support needs. We do hope that you find this information useful.

<https://www.autismtoolbox.co.uk/>

***If you would like this newsletter or any other documentation from nursery translated into another language or an alternate reading format, please don not hesitate to contact us.***



# Outdoor Education Policy

<b>Published</b>	October 2014 (V1)
<b>Revised</b>	May 2023 (V2)

Wellies  
Nurseries





## **Outdoor Education Policy (NCS: 2.2, 2.3 & 3.5)**

At Wellies Nurseries we are committed to the importance of daily outdoor play and the physical development of all children regardless of their age and stage of development. We provide outdoor play in all weathers. Where possible and appropriate, we make outdoor activities accessible to children with learning difficulties and disabilities to ensure inclusive use of the outdoor area.

We recognise that children need regular access to outdoor play in order to keep fit and healthy, develop their large and fine motor skills, experience learning in a natural environment and access sunlight in order to absorb vitamin D more effectively.

The outdoor areas, both within the nursery grounds and in the local community have a wealth of experiences and resources which help children to develop in a variety of ways, including independence, exploration and investigative skills, risk taking and self-esteem, all of which support children to develop skills now and for the future.

We ensure all areas are safe and secure through close supervision and the use of robust risk assessments and safety checks. Where possible and appropriate, we plan and encourage play that helps children understand and manage risks. This type of play allows children to explore and find their own boundaries in a safe environment with supportive practitioners. Staff are informed of the importance of safety procedures and are trained appropriately to ensure these procedures are followed effectively.

We obtain parental permission before any child leaves the nursery during the day. This includes short outings into the local community. There is more information in the outings policy.

We plan all outdoor play opportunities and outings to complement the indoor activities and provide children with purposeful activities that support and follow individual children's interests. There is a balance of both adult-led and child-initiated opportunities to enable children to learn and practice new skills, knowledge and behaviours.

We use this policy alongside the following policies to ensure the safety and welfare of children throughout their time outside:

- Health and safety
- Sun care
- Caring for babies and toddlers
- Lost child policy
- Parents and carers as partners
- Supervision of children
- Child Protection
- Outings.

## Outdoor Play

At Wellies Nurseries we are committed to the importance of daily outdoor play and the physical development of all children regardless of their age and stage of development. We provide outdoor play in all weathers. Where possible and appropriate, we make outdoor activities accessible to children with learning difficulties and disabilities to ensure inclusive use of the outdoor area.

We recognise that children need regular access to outdoor play in order to keep fit and healthy, develop their large and fine motor skills, experience learning in a natural environment and access sunlight in order to absorb vitamin D more effectively.

The outdoor areas, both within the nursery grounds and in the local community have a wealth of experiences and resources which help children to develop in a variety of ways, including independence, exploration and investigative skills, risk taking and self-esteem, all of which support children to develop skills now and for the future.

We ensure all areas are safe and secure through close supervision and the use of robust risk assessments and safety checks. Where possible and appropriate, we plan and encourage play that helps children understand and manage risks. This type of play allows children to explore and find their own boundaries in a safe environment with supportive early learning and childcare practitioners. Staff are informed of the importance of safety procedures and are trained appropriately to ensure these procedures are followed effectively.

We obtain parental permission before any child leaves the nursery during the day. This includes short outings into the local community. There is more information in the outings policy.

We plan all outdoor play opportunities and outings to complement the indoor activities and provide children with purposeful activities that support and follow individual children's interests. There is a balance of both adult-led and child-initiated opportunities to enable children to learn and practice new skills, knowledge and behaviours.

Where activities take place away from the setting (e.g. in the local wood) then a mobile phone and first aid kit will be taken to ensure the safety of children at all times. A trained paediatric first aider will be present when away from the main setting.

We use this policy alongside the following policies to ensure the safety and welfare of children throughout their time outside:

- Health and safety
- Sun care
- Caring for babies and toddlers
- Lost child policy
- Parents and carers as partners
- Supervision of children
- Child Protection
- Outings.



# Sun Care Policy

<b>Published</b>	March 2015 (V1)
<b>Reviewed</b>	March 2016 (V2)
<b>Reviewed</b>	May 2023 (V3)
<b>Revised</b>	Annually

Wellies  
Nurseries



## **Sun Care Policy**

Young children need special care when they are in the sun. They love playing outdoors, but they are not aware of how the sun can damage their skin. So as adults it is important that we take precautions for them.

Getting sunburnt as a child leads to greater risk of skin cancer in later life, but the good news is that sun damage can be avoided. Experts believe that four out of every five cases of skin cancer are preventable.

It is important that children, especially young children, are given the protection they deserve.

Sun Know How

Health Education Authority 1998

### **Aims**

- To protect children while they are in our care at any Wellies Nurseries setting.
- To help work in partnership with parents to protect children at other times.
- To help children understand the importance of keeping themselves safe in the sun.

### **How aims are to be achieved**

1. Wellies Nurseries staff to educate themselves about the risks of sunburn.
2. Wellies Nurseries staff to provide protective care over the summer months between April and September.
3. Wellies Nurseries staff to take particular care when children are outside during the hottest part of the day between 11 a.m. and 3 p.m. during this period children should:
  - Wear the legionnaire style hats provided
  - Wear clothing covering shoulders and arms
  - Only be outside for limited periods, when it is sunny
  - Wear appropriate sunscreen.
4. Provide shady areas in the playground.
5. Parents will be informed about the nursery policy and be encouraged to keep their children safe in the sun through:
  - A newsletter at the beginning of term
  - Informal information from staff
  - Appropriate use of sunscreen
  - Appropriate eye protection with a brimmed hat and ideally sunglasses with UV filters.
6. At the beginning of the summer term staff will explain to children about the need to keep safe in the sun and how to do this.

### **Evaluation**

- Regular review with consultation of all relevant parties.

### **Application of Suncream**

Parents /Carers are asked to apply the child's first application of suncream at home prior to attending any Wellies Nurseries setting. Staff will then apply cream to the children at regular intervals throughout the day. Staff do not need to wear gloves when applying cream as long as they have no broken skin and the child, they are applying it to does not have any broken skin. Staff are to wash their hands in between the application of different creams to avoid any cross contamination.



## **Questions & Answers**

### **Why is sun protection important for children and young people?**

Skin cancer is one of the most common cancers in the UK and the number of cases is rising at an alarming rate. The good news is that the majority of these cases can be prevented. Most skin cancers are caused by ultraviolet (UV) radiation from the sun. If we protect ourselves from the sun then we can reduce our risk. This is particularly important for children and young people whose skin is more delicate and easily damaged.

There are simple steps you can take to enjoy the sun safely – cover up with clothing and a hat, spend time in the shade and apply at least SPF 15 sunscreen generously and regularly.

### **What about vitamin D?**

We all need some sun to make enough vitamin D. Enjoying the sun safely, while taking care not to burn, should help most people get a good balance without raising the risk of skin cancer. For more information on vitamin D, visit the SunSmart website: [www.sunsmart.org.uk](http://www.sunsmart.org.uk)

### **Why have a Sun Protection Policy?**

Nurseries and schools have a responsibility to ensure that children are protected from overexposure to UV rays from the sun, and the National Institute for Clinical Excellence (NICE) guidelines for skin cancer prevention (2011) recommend that schools and nursery's "develop, implement and monitor a specially tailored policy to ensure people are protected as much as possible". This is particularly important when engaging in nursery-based activities such as sports days, outdoor PE lessons, outdoor excursions, where the potential for sunburn is higher. Although fair-skinned people have a higher risk of sun damage, sun care is relevant to everyone. Developing a sun protection policy is an important step towards encouraging good health now and in the future.